

# Task 1: Grant Administration

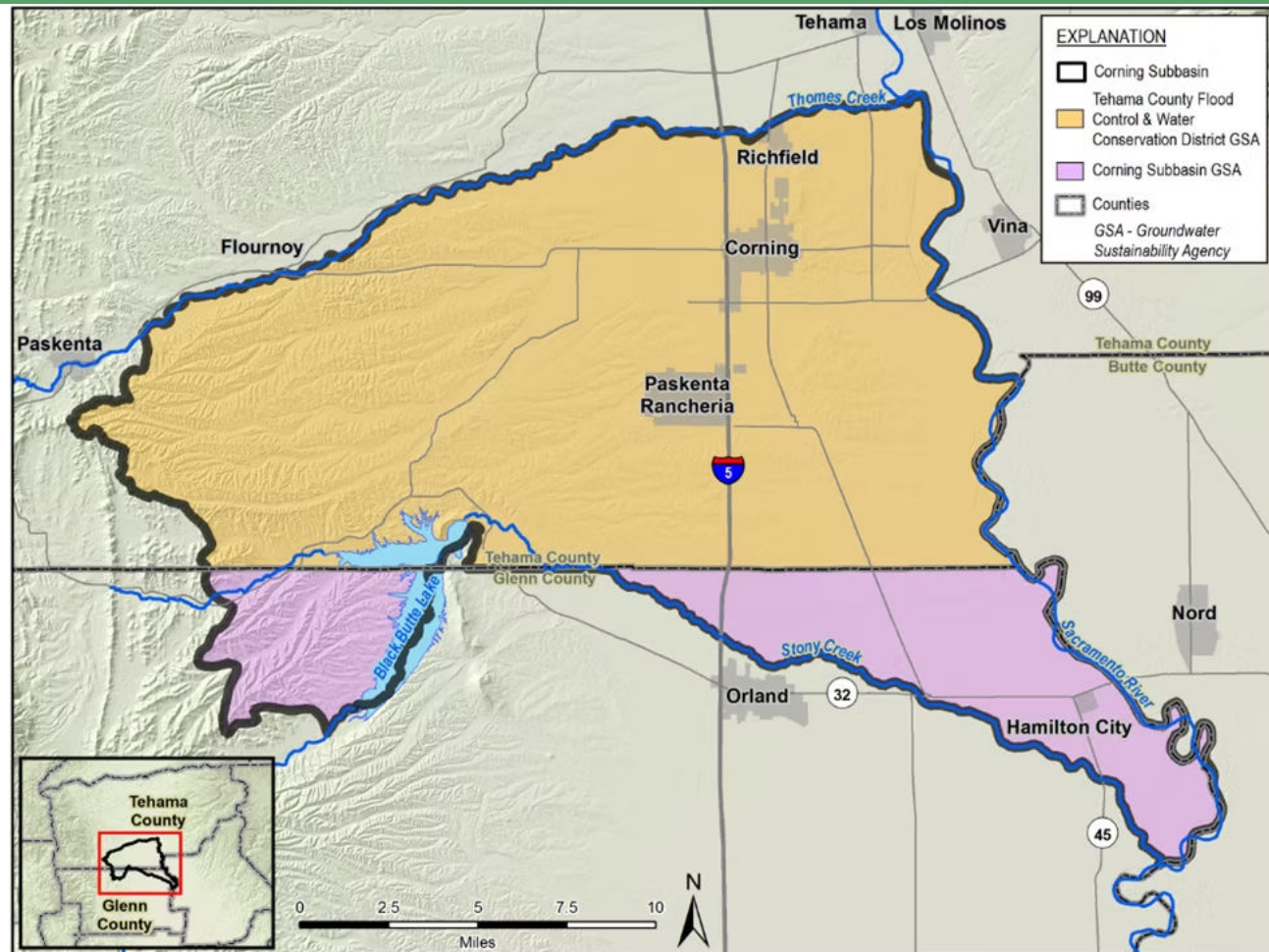
**Task Objective:** Prepare and submit quarterly progress and invoicing reports to DWR

- **Task Progress:**

- PR1-6 submitted to DWR
- IR1-6 submitted to DWR

- **Next Steps:**

- Preparing PR 7 (July-Sept. 2025)
- Preparing IR 7 (July-Sept. 2025)
- Submit PR/IR 7 to DWR
- Continue DWR Coordination Mtgs.



# Task 2: GSP Implementation

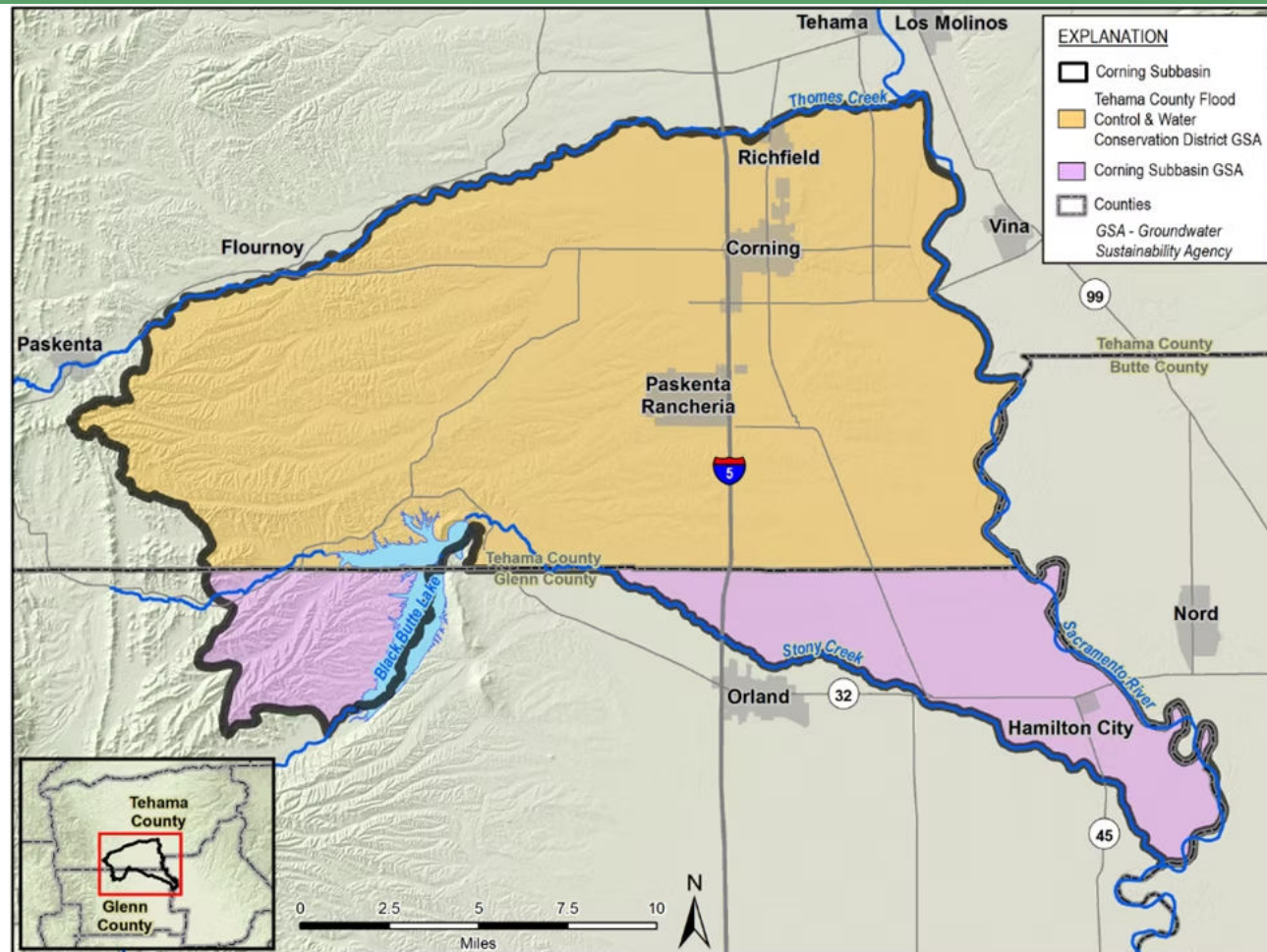
**Task Objective:** Conduct GSP implementation activities in accordance with SGMA requirements

- **Task Progress:**

- Annual Reports: working on WY25
- Periodic Evaluation drafted

- **Next Steps:**

- Complete WY25 Annual Report
- Complete Periodic Evaluations
- Outreach: Fall Newsletter
- Outreach: Dec. Public Workshops
- Outreach: Preparing videos



# Task 2: Modeling Approach Update

- **Task Progress:**

- Expanded the Tehama Model (SVSim) domain to cover the entire Corning Subbasin (plus a 5- mile buffer).
- Improved texture model with borehole geophysical data and AEM Data for both SVSim and C2VSim models.
- Updating demand parameters on both models using updated domain (Davids Engineering), improved ET values and crop coefficients

- **Next Steps:**

- Integrating ISW data to improve calibration of streamflow modeling.
- Integrating results of GDE mapping and seepage run results.





## Task 3.2 Multi-Completion Wells

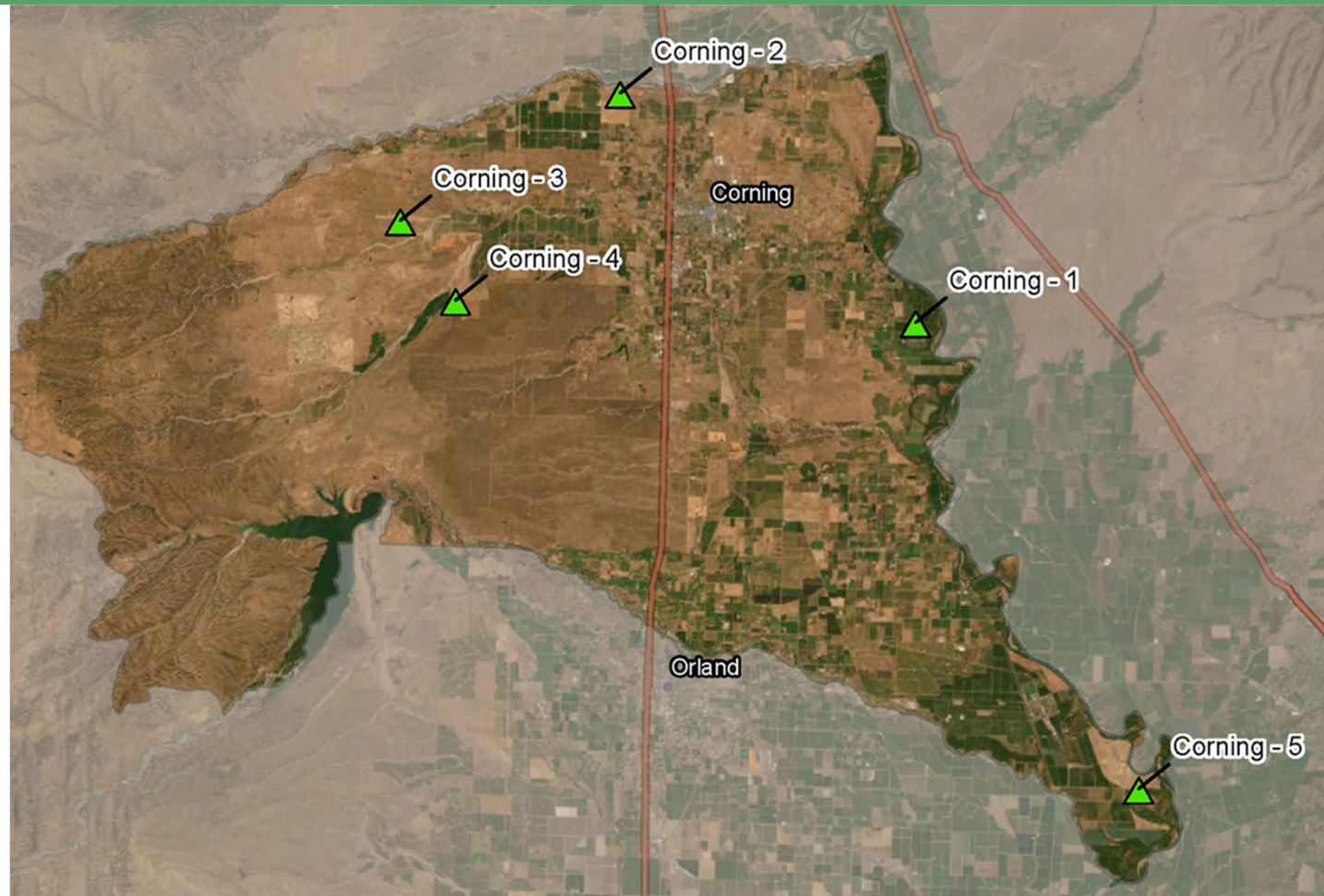
**Task Objective:** Install 5 M-C Monitoring Wells in Corning Subbasin

• **Task Progress:**

- Well construction completed
- Well reports filed with DWR

• **Next Steps:**

- Survey well locations
- Conduct well sampling
- Update monitoring plan
- Install monitoring equipment



# Task 3.2 Interconnected Surface Water (ISW) Monitoring Wells

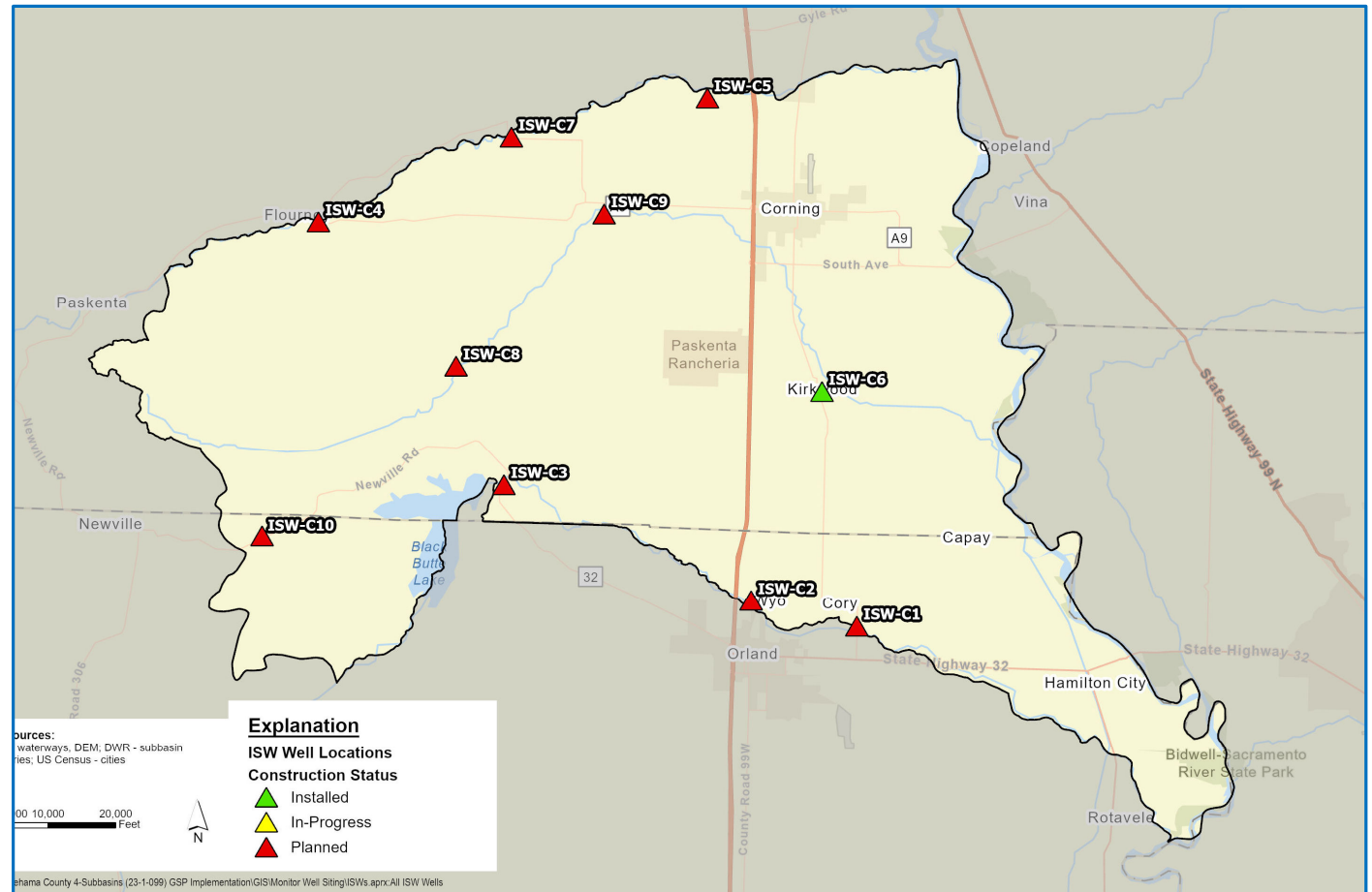
**Task Objective:** Install 10 ISW Monitoring Wells and co-located stream gages

**Task Progress:**

- Installation has begun
- ISW-C6 is installed

**Next Steps:**

- Install remaining wells
- Survey well locations
- Install co-located stream gages
- Install monitoring equipment



# Task 3.5 Community Domestic Groundwater Monitoring Program

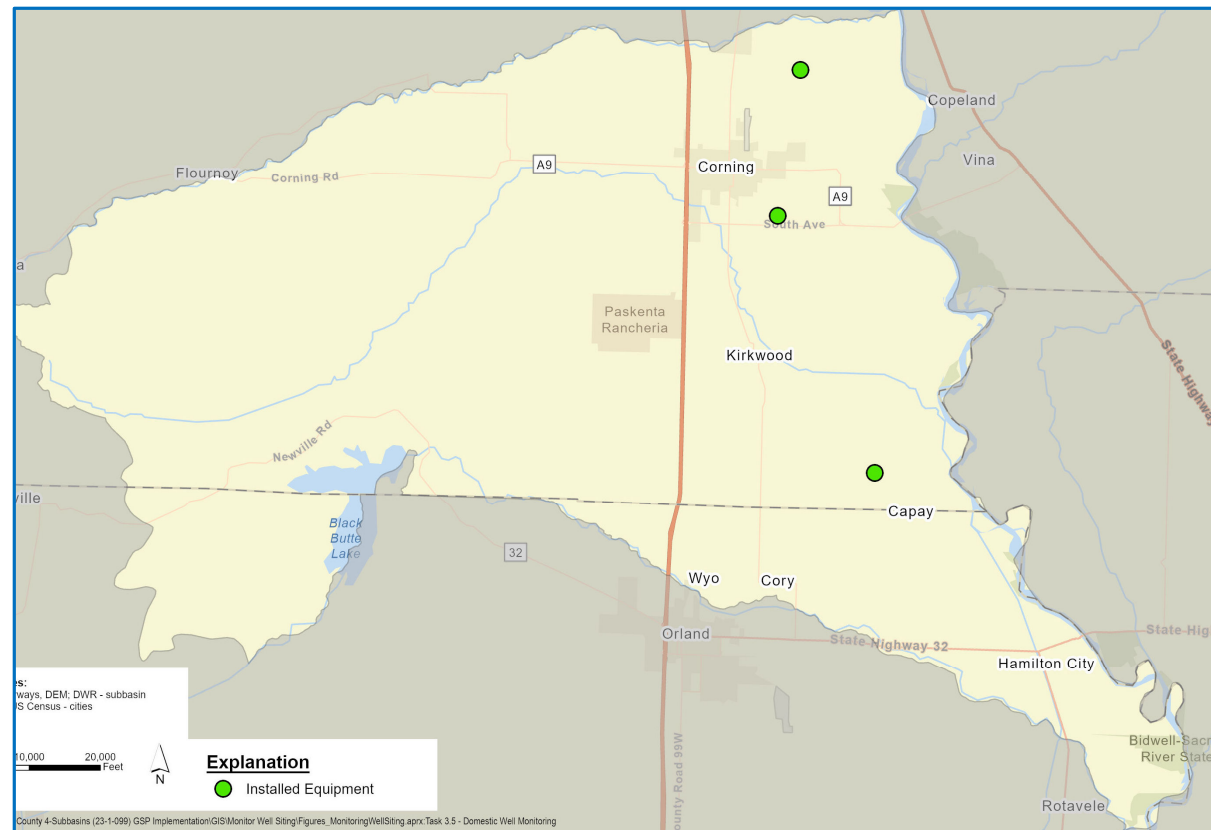
**Task Objective:** Install Monitoring Equipment on 25 Domestic Wells

- **Task Progress:**

- Equipment has been installed on 3 total volunteer wells
- More volunteers can be accommodated. Interested parties can reach out to:
  - Marian Singer | [mjsinger@wellIntel.com](mailto:mjsinger@wellIntel.com)
  - Stephanie Horii | [shorii@cbi.org](mailto:shorii@cbi.org)
  - Holly Stanitsas | [Holly.Stanitsas@stantec.com](mailto:Holly.Stanitsas@stantec.com)

- **Next Steps:**

- Continue installing equipment and registering volunteers
- Build data visualization and integration with current GSA data viewers





# Tasks 4 & 5

## **Task Objectives:** Direct and In-Lieu Groundwater Recharge

### • **Task Progress:**

- 5-Year Diversion Permit Applications Submitted (Thomes and Stony Creeks)
- California Olive Ranch Turnout Permit Application Submitted
- Surface Water Connection projects prioritized

### • **Next Steps:**

- Acquire equipment for SW diversions
- Finalize CA Olive Ranch Designs and put to bid
- Finalize Landowner Agreements for SW Connections

