



Corning Subbasin Advisory Board



Members

Matt Hansen -- Dave Lester -- Steve Gruenwald -- Ian Turnbull (Alternate)
John Amaro -- Brian Mori -- Julia Violich -- Grant Carmon (Alternate)

Tehama County Flood Control
and Water Conservation District

Corning Subbasin Advisory Board Special Meeting Materials

March 27, 2024 | 2:00 p.m.

In-Person Location:

City of Corning Council Chambers
794 Third Street
Corning, CA 96021

Due to limited parking for Corning City Hall, meeting attendees are asked to park their vehicles in the parking lot across from City Hall, next to the railroad tracks.

Alternate Meeting Location:

1177 Magnolia Ave., Larkspur, CA 94939

Remote Public Participation Option:

Microsoft Teams meeting

Join on your computer, mobile app or room device

[Click here to join the meeting](#)

Meeting ID: 259 575 147 922

Passcode: 7dzwjf

[Download Teams](#) | [Join on the web](#)

Or call in (audio only)

[+1 323-676-6164,,795833671#](#) United States, Los Angeles

Phone Conference ID: 795 833 671#

[Find a local number](#) | [Reset PIN](#)

[Learn More](#) | [Meeting options](#)

1. Call to Order

The meeting will be called to order.

2. Roll Call

Staff will conduct roll call.

3. Period of Public Comment

Members of the public are encouraged to address the Corning Subbasin Advisory Board. Public comment will be limited to three minutes. No action will be taken on items under public comment.

4. Groundwater Sustainability Plan Determination Response

- a. *Review and recommendation to Groundwater Sustainability Agencies on setting revised Minimum Thresholds and Sustainable Management Criteria for Groundwater Levels.
- b. *Review and recommendation to Groundwater Sustainability Agencies to adopt Demand Management Resolution.
- c. *Review and recommendation to Groundwater Sustainability Agencies to adopt Well Mitigation Resolution.
- d. *Review and recommendation to Groundwater Sustainability Agencies to adopt Draft Revised portions of the Corning Subbasin Groundwater Sustainability Plan.

On October 26, 2023, the Department of Water Resources (DWR) determined the Corning Subbasin GSP to be “incomplete” The GSAs have 180 days to address the deficiencies and resubmit the GSP for evaluation no later than April 23, 2024.

The consulting team, Luhdorff & Scalmanini Consulting Engineers (LSCE), are supporting the efforts to revise the Corning Subbasin GSP to address DWR’s comments. The CSAB will consider making recommendations to the GSAs on specific components of the revision process, particularly related to determining minimum thresholds and sustainable management criteria for groundwater levels, and Resolutions showing commitment to implementing a well mitigation program and a demand management program.

Additional updates may be provided on activities relating to the Corning Subbasin GSP Revisions.

Attachments:

- GSP Revision and Implementation Status Presentation
- Corning Subbasin SMC Data Package (will be provided separately)
- Draft Revised Portions of the Corning Subbasin GSP (key changes included in data package)
- Draft Corning Subbasin Demand Management Program Resolution
- Draft Corning Subbasin Well Mitigation Program Resolution

GSP Revision and Implementation Status

Corning Subbasin Advisory Board Meeting



TEHAMA COUNTY
FLOOD CONTROL AND WATER CONSERVATION DISTRICT

March 27, 2024



CSAB Special Meeting Agenda

- Revised GSP Update
- Review and Recommend Setting Revised Minimum Thresholds and Sustainable Management Criteria
- Review and Recommend Adoption of Demand Management Resolution
- Review and Recommend Adoption of Well Mitigation Resolution
- Review and Recommend Adoption of Draft Revised Portions of the Corning Subbasin GSP
- Overview of Next Steps (no action)



2

Draft GSPs

Goal for this meeting: Review and Recommend Adoption of Draft Revised Portions of Corning Subbasin GSPs.

Materials included in Meeting Packet: Draft Revised Portions of the GSP

Next steps for the GSP:

- 3/28 (Tomorrow) Corning Sub-basin GSA to receive presentation on updated portions of the Corning GSP
- 4/4 Joint GSA Meeting to review, and provide comments on the Corning GSP, inclusive of the revised MTs, SMCs
- 4/11 Corning Sub-basin GSA meeting, public hearing to adopt the Revised Corning GSP
- 4/15 Tehama FCWCD Board of Directors meeting, public hearing to adopt the Revised Red Bluff, Los Molinos, Antelope, and Corning GSPs



MTs and SMCs

Goal for this meeting: Review and Recommend Setting Revised Minimum Thresholds and Sustainable Management Criteria for the Corning Subbasin GSP.

Materials included in Meeting Packet: Draft Revised Portions of the Corning GSP

Next steps for the MTs and SMCs:

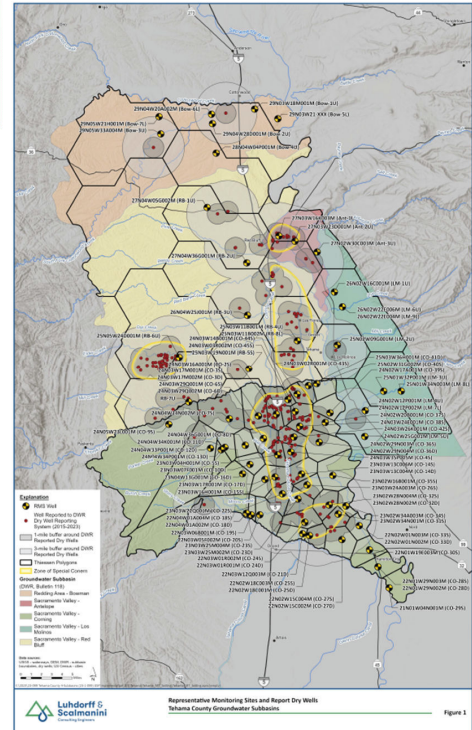
- 3/27 (Earlier Today) Tehama County Groundwater Commission reviewed and considered setting revised MTs and SMCs for the Corning GSP
- 3/28 (Tomorrow) Corning Sub-basin GSA Meeting to receive presentation on revised MTs, SMCs for the Corning GSP
- 4/4 Joint GSA Meeting to review and to provide comments on the Corning GSP, inclusive of the revised MTs, SMCs
- 4/11 Corning GSA Board Meeting, public hearing to adopt the Revised Corning GSP
- 4/15 Tehama FCWCD Board of Directors Meeting, public hearing to adopt the Revised Red Bluff, Los Molinos, Antelope, and Corning GSPs



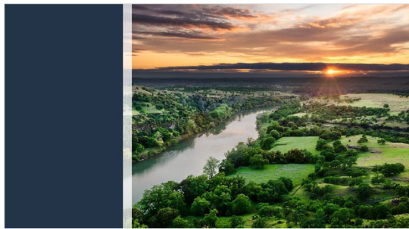
Corning GSP – Revised Groundwater Level Minimum Threshold, Sustainable Management Criteria

- Overview
- Special Zones (Based on Dry Wells Reporting)
- Minimum Thresholds (MT)
 - Within Specialized Zones, 2015-2022 Groundwater Low
 - Outside of Specialized Zones, 2015-2022 Groundwater Low plus a 20' Buffer

<https://infolsce.maps.arcgis.com/apps/webappviewer/index.html?id=f72886c3ddf440648d30caf73013d1ac>



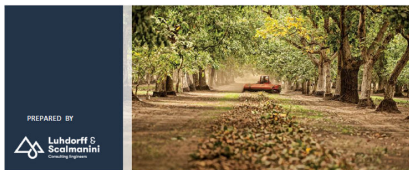
MTs and SMCs



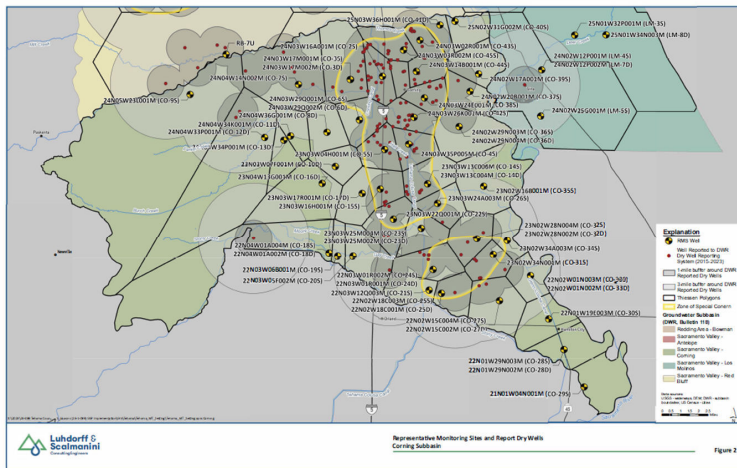
SMC Data Package

Corning Subbasin

March 27-28, 2024



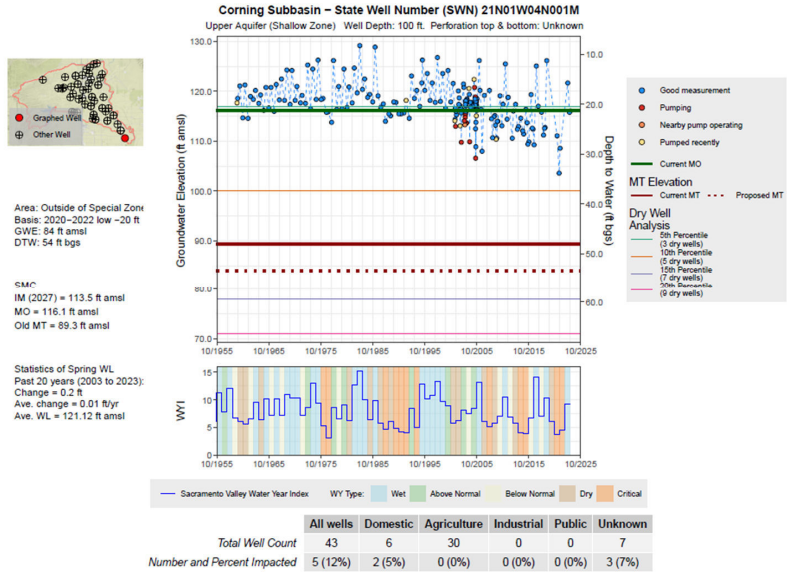
PREPARED BY
Luhdorff & Scatamini



<https://infolsce.maps.arcgis.com/apps/webappviewer/index.html?id=f72886c3ddf440648d30caf73013d1ac>

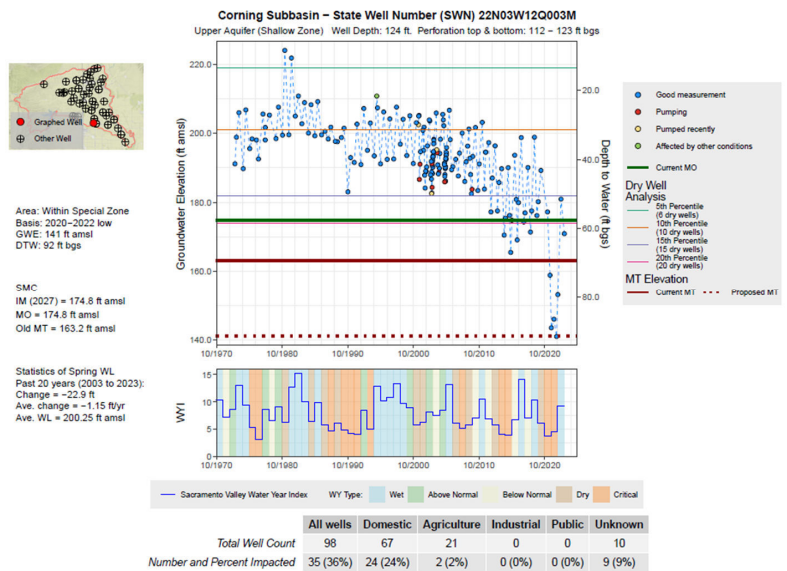


MTs and SMCs



7

MTs and SMCs



8

Recommend Adoption of Revised Portions of GSP

Actions:

- Corning-Subbasin GSA and Tehama County FCWCD Board of Directors provide comments at their 4/4 Joint GSA Board meeting.
- Comments will be incorporated, and adoption of the Revised Corning GSP will occur at the 4/11 Corning Sub-basin GSA meeting
- Comments will be incorporated, and adoption of the Revised Red Bluff, Los Molinos, Antelope, and Corning GSPs will occur at the 4/15 Tehama FCWCD Board of Directors meeting.

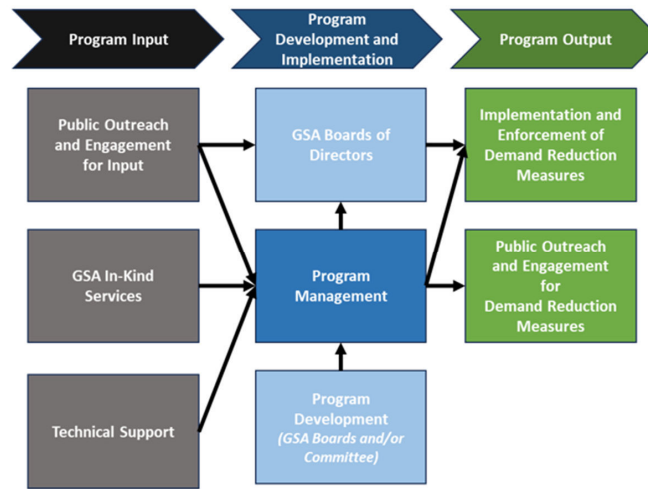


Draft Resolutions

- **Goal for this meeting:** Review and Recommend Adoption of the Demand Management and Well Mitigation Resolutions for the Corning Subbasin at the upcoming Joint GSA Board Meeting scheduled for April 4.
- Materials included in Meeting Packet: Draft Demand Management and Well Mitigation Resolutions for Corning (methodology was previously approved in concept at 3/6 CSAB Meeting)
- Next steps for the Resolutions:
 - Legal Review
 - 3/25 (Earlier Today) Tehama Groundwater Commission received an update on their Board's review and adoption of the resolutions in the Corning Subbasin
 - 3/28 (Tomorrow) CSGSA Meeting to review draft resolutions for the Corning Subbasin
 - 4/4 Joint GSA Meeting to adopt the resolutions for the Corning Subbasin
 - Resolutions included in Revised GSPs, submitted to DWR

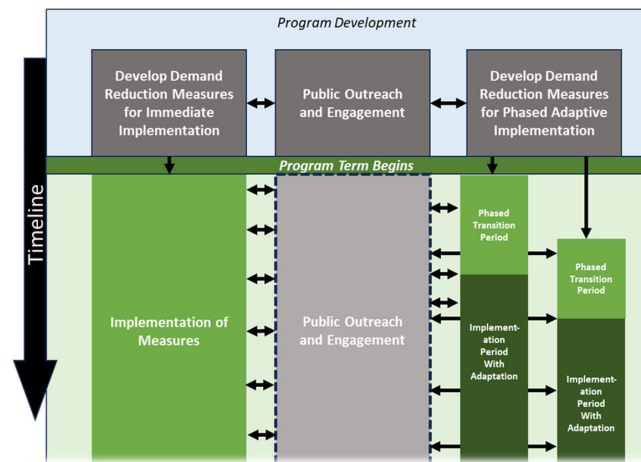


Demand Management Resolution – Highlights



DRAFT Organizational Structure

Demand Management Resolution – Highlights

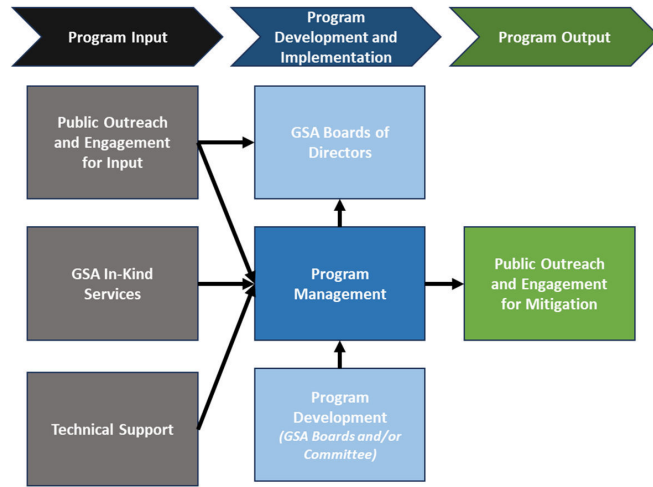


- Notes:
1. Steps shown herein are intended to demonstrate critical components and is not intended to be indicative of all steps that may be required for Program implementation.
 2. Steps shown herein are subject to revision by the CGA and GGA GSAs.



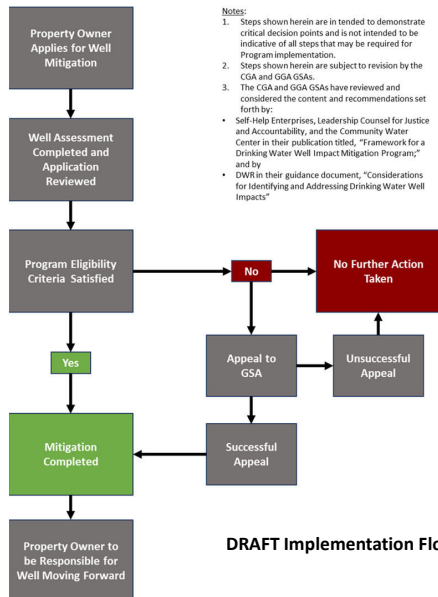
DRAFT Implementation Flowchart

Well Mitigation Resolution – Highlights



DRAFT Organizational Structure

Well Mitigation Resolution – Highlights



DRAFT Implementation Flowchart

Notes:

- Steps shown herein are intended to demonstrate critical decision points and is not intended to be indicative of all steps that may be required for Program implementation.
- Steps shown herein are subject to revision by the CGA and GGA GSAs.
- The CGA and GGA GSAs have reviewed and considered the content and recommendations set forth by:
 - Self-Help Enterprises, Leadership Counsel for Justice and Accountability, and the Community Water Center in their publication titled, "Framework for a Drinking Water Well Impact Mitigation Program," and by
 - DWR in their guidance document, "Considerations for Identifying and Addressing Drinking Water Well Impacts"

Colusa Subbasin Domestic Well Mitigation Program

DRAFT Initial Well Evaluation Outline To Be Completed by Licensed Preferred Contractor

The Initial Well Evaluation (Evaluation) is a formal, structured assessment of each drinking water well for which enrollment in the Domestic Well Mitigation Program is sought. The objectives of the Evaluation are to:

- Inspect the conditions of the well, including an assessment of the current or anticipated operational issue(s) associated with the well and underlying causes of those impacts.
- Determine that the well impacts are related to groundwater management during the GSP Implementation Period (e.g., not related to normal wear and tear)
- Determine and recommend an appropriate mitigation strategy (i.e., one of the potential Program mitigation measures identified in the MOU).

It is anticipated that the Evaluation will assess and address the following topics, although this list is subject to revision during Program development:

- Property Owner and Location Information
 - Name and contact information of property owner
 - Name and contact information of contact at well location (if different)
 - Well location (address, assessor's parcel number of parcel where well is located, coordinates identifying where well is located)
 - Nearest municipal or public water system (name, distance; mapping tool may be useful)
 - Nearest groundwater level RMS well (SWN, distance; mapping tool may be useful)
- Well Information
 - Well completion report number of well
 - State well number of well
 - Date drilled
 - Well construction details
 - Borehole information (depth, diameter)
 - Casing information (depth, diameter, material, wall thickness)
 - Gravel pack information (if it is gravel packed, depth interval of gravel pack)
 - Sanitary seal information (depth)
 - Perforation details (number, intervals, type, where pump is currently installed)
 - Remaining operational life expectancy of well, given well construction conditions and date drilled
- Pump information
 - Date installed

DRAFT Initial Well Evaluation

Recommend Adoption of Resolutions

Actions:

- Recommend Tehama County FCWCD Board of Directors and Corning Sub-Basin GSA Committee adopt the Demand Management Resolution for the Corning Subbasin during their Joint Meeting on April 4.
- Recommend Tehama County FCWCD Board of Directors and Corning Sub-Basin GSA Committee adopt the Well Mitigation Resolution for the Corning Subbasin during their Joint Meeting on April 4.



Meetings

Tehama County Regular Meetings

- Groundwater Commission at 8:30a in Board Chambers Room, 727 Oak St., Red Bluff:
Apr 24 | May 22
- Flood Control Board of Directors at 10a in Board Chambers Room, 727 Oak St., Red Bluff:
Apr 4 (Tentative)* | Apr 15 | May 20

**Flood Control Board of Directors Apr 4 meeting will be at 1:30p in City of Corning Council Chambers, 794 Third Street, Corning*

Corning Subbasin Regular Meetings

- Corning Subbasin Advisory Board (CSAB) at 1:30p in City of Corning Council Chambers, 794 Third Street, Corning
Apr 3 | Jun 5 | Aug 7
- Corning Sub-basin GSA Committee (Glenn County) at 2p in Glenn-Colusa Irrigation Pump Station , 7854 County Rd 203, Orland
Mar 28 | Apr 4 (Tentative) * | Apr 11 | Apr 25 | May 23

**Corning Sub-basin GSA Committee Apr 4 meeting will be at 1:30p in City of Corning Council Chambers, 794 Third Street, Corning*



Stay Involved and Connect with Us

Updates

- Join the Interested Parties email list (Tehama) at TehamaCountyWater.org/GSA/ or by emailing TehamaGSA@tcpw.ca.gov
- Facebook: Tehama County Flood Control & Water Conservation District
- Join the Interested Parties email list (Corning Sub-basin GSA) at glennsgma@countyofglenn.net or by emailing Lisa Hunter at Lhunter@countyofglenn.net
- [Corning Sub-basin Groundwater Sustainability Agency | County of Glenn](#)



Monitoring & Projects

- Data Viewer Map: bit.ly/TehamaGlennSGMADataMapView



Domestic Well Monitoring



Recharge Opportunities

Questions?



*** DRAFT FOR DISCUSSION ***

ESTABLISHING A DEMAND MANAGEMENT PROGRAM
FOR THE CORNING SUBBASIN

RECITALS

- A. **WHEREAS**, groundwater and surface water resources within the Corning Subbasin are vitally important resources for all beneficial uses and users, and to maintain the economic viability, prosperity, and sustainability of the Subbasin; and
- B. **WHEREAS**, in 2014 the California Legislature passed a statewide framework for sustainable groundwater management, known as the Sustainable Groundwater Management Act, California Water Code § 10720-10737.8 (SGMA), pursuant to Senate Bill 1168, Senate Bill 1319, and Assembly Bill 1739, which was approved by the Governor on September 16, 2014. and went into effect on January 1, 2015; and
- C. **WHEREAS**, the Subbasin has been designated by the California Department of Water Resources (DWR) as a high-priority subbasins and is subject to the requirements of SGMA; and
- D. **WHEREAS**, SGMA requires that all medium and high priority groundwater basins in California be managed by a GSA and that such management be implemented pursuant to an approved Groundwater Sustainability Plan (GSP); and
- E. **WHEREAS**, in January of 2022, the Corning Sub-basin GSA (CSGSA) and Tehama County Flood Control and Water Conservation District (the District), collectively the GSAs, submitted the Corning Subbasin GSP to DWR; and
- F. **WHEREAS**, in October of 2023, DWR determined the GSP was incomplete and would require revisions prior to being determined as adequate under SGMA; and
- G. **WHEREAS**, SGMA defines sustainability as the management of groundwater that can be maintained during the 20-year GSP Implementation Period without causing undesirable results; and
- H. **WHEREAS**, under SGMA the GSAs are responsible for managing groundwater under the GSP to achieve and maintain sustainability according to conditions after SGMA was effective that are caused by groundwater management in the Subbasin; and
- I. **WHEREAS**, it is acknowledged that sustainable management may result in some groundwater level decline during the GSP Implementation Period prior to achieving sustainable groundwater conditions by or before 2042 and this decline may give rise to adverse impacts to some wells; and
- J. **WHEREAS**, the GSAs acknowledge that during the GSP Implementation Period it will be necessary to implement projects and management actions to achieve and maintain sustainable groundwater conditions in the Subbasins by or before 2042; and
- K. **WHEREAS**, it is acknowledged that successful implementation of planned GSP projects to achieve their intended recharge benefits during the 20-year GSP Implementation Period

***** DRAFT FOR DISCUSSION *****

(prior to 2042) is dependent in part on uncertainties related to hydrologic conditions, including precipitation and snowpack, and available water supply during that time period; and

- L. **WHEREAS**, the GSAs acknowledge that implementation of management actions will be necessary to offset these uncertainties related to project implementation and project benefits to ensure that sustainable groundwater conditions are achieved in the Subbasin by or before 2042; and
- M. **WHEREAS**, it is acknowledged that wet hydrologic conditions and faster implementation of projects may result in diminished need for management actions, and
- N. **WHEREAS**, the GSAs acknowledge that dry hydrologic conditions, prolonged drought, and delayed implementation of projects may result in an accelerated need for management actions; and
- O. **WHEREAS**, the GSAs recognize that in order to obtain a determination that the GSPs are adequate, DWR is seeking a firm commitment from the GSAs for their consideration of management action(s) to address and mitigate overdraft and groundwater level decline during their management of the Subbasin; and
- P. **WHEREAS**, the GSAs acknowledge that they cannot control groundwater conditions not caused by actions taken by the GSA; and
- Q. **WHEREAS**, the GSAs acknowledge that SGMA requires sustainable groundwater management; however, SGMA does not make GSAs responsible for injury from overdraft; and
- R. **WHEREAS**, the GSAs acknowledge that management action(s) to address and mitigate overdraft, groundwater level decline, and subsidence will be implemented in coordination with other related programs in the Subbasin and in the region, as applicable.
- S. **NOW, THEREFORE**, in consideration of the conditions contained herein and these Recitals, which are hereby incorporated herein by this reference, the District or CSGSA has committed to review, consider, and undertake mitigation actions for demand management through development of a Demand Management Program (Program) as follows:

Commented [LH1]: One resolution for each agency; select the appropriate GSA

AGREEMENT

1. PROGRAM MEASURES

The Program is anticipated to include some subset of the following Program measures:

- Measures to be considered and moved forward for **immediate implementation (at the Program start date)**. Measures may include, but are not limited to, the following voluntary measures for reducing demand:
 - Best management practices (agronomic practices, soil moisture monitoring and management, delayed irrigation and/or regulated deficit irrigation, runoff capture, etc. to reduce groundwater extraction)

***** DRAFT FOR DISCUSSION *****

- Water conservation (focusing on activities to reduce consumptive use and groundwater extraction)
 - Encouraging use of all available surface water in lieu of groundwater pumping
 - Multi-benefit land repurposing (e.g., recharge basins, renewable energy, habitat, recreational spaces)
 - Incentivized land use changes that provide net groundwater benefit
 - Dry farming
 - Fallowing (not associated with groundwater substitution transfers)
- Measures to be considered and moved forward for **phased adaptive implementation** (i.e., develop the actions further so that they are ready to implement in phases, commensurate with issues). Measures may include, but are not limited to:
 - Allocations, considering:
 - Well restrictions
 - Pumping restrictions
 - Water market/trading and/or fee structures
 - Phased adaptive implementation measures are to be implemented commensurate with:
 - The amount of demand reduction required.
 - The issue(s) facing the area(s) where the measure(s) are to be implemented, considering, but not confined to:
 - Options for regional implementation of certain actions (around a “Special Zones” where undesirable results are occurring), and/or
 - Options for Subbasin-wide implementation of certain actions (equal treatment of the Subbasin as a whole).
 - Options for Management Area-wide implementation of certain actions (equal treatment for all subbasins within the Subbasin or the entirety of the Subbasin)

2. FUNDING AND FINANCING

The District and CSGSA will fund the Program through long term GSA funding mechanisms as determined by the District Board and CSGSA respectively.

Estimated expenses for the Program are difficult to ascertain due to the significant variables involved. However, budgetary numbers will range from \$150,000 to \$1,000,000 annually.

However, these numbers are only estimated for planning purposes and are subject to revision during Program development.

It is anticipated that the Program funding will come from one, or a combination, of the following sources established by the Parties:

***** DRAFT FOR DISCUSSION *****

- GSA fees and assessment
- Funds generated through implementation of other projects and management actions (e.g., fines and/or penalties)
- County/state/federal funding, as available
- Other sources, as identified

3. TERM

The Program shall be developed and implementation shall begin no later than January 1, 2027 (the Program start date). Upon implementation, the Program shall continue in perpetuity unless otherwise directed by the GSAs.

4. PROGRAM DEVELOPMENT

The GSAs shall, as part of Program development, define the Program's purpose, objectives, scope, roles and responsibilities, requirements, and potential outcomes.

The anticipated goal of the Program is to address and mitigate overdraft and groundwater level decline, and related undesirable results during the GSP Implementation Period, as defined in the Revised GSP, by reducing demand for groundwater.

Items for consideration during Program development include, but are not limited to:

- Definitions
- Program measures, including:
 - Measures for immediate implementation (i.e., measures that will move forward at the Program start date)
 - Measures for phased adaptive implementation (i.e., measures that will be developed further so that they are ready to implement in phases, commensurate with issues)
- Public outreach and engagement process
- Coordination of Program with other related programs in the region, as applicable
- Implementation considerations and protocol for phased adaptive implementation measures:
 - Identification of area(s) where measures are applicable
 - Determination of sustainable yield for those areas
 - Determination of an appropriate transition period from current to sustainable conditions (prior to 2042), considering uncertainties of the basin setting and of the timelines for other projects.
 - Process and timeline for implementing phased measures.
 - Process and timeline for evaluating and adapting measures to respond to changing conditions (in annual reports and periodic GSP evaluations).

***** DRAFT FOR DISCUSSION *****

- Considerations for allocation development and enforcement, as applicable, related to consumed versus extracted groundwater
- Monitoring and enforcement process
- Funding and financing, including the planned annual Program funding responsibilities.

5. PROGRAM IMPLEMENTATION AND MANAGEMENT

It is anticipated that a committee will be formed to create and set the final terms of the Program. The final implementation and management of the Program will be approved by the GSAs prior to the program start date.

6. ENVIRONMENTAL REVIEW

The GSAs will complete any environmental review as may be determined necessary for Program implementation.

*** DRAFT FOR DISCUSSION ***

ESTABLISHING A WELL MITIGATION PROGRAM
FOR THE CORNING SUBBASIN

RECITALS

- A. **WHEREAS**, groundwater and surface water resources within the Corning Subbasin are vitally important resources for all beneficial uses and users, and to maintain the economic viability, prosperity, and sustainability of the Subbasin; and
- B. **WHEREAS**, in 2014 the California Legislature passed a statewide framework for sustainable groundwater management, known as the Sustainable Groundwater Management Act, California Water Code § 10720-10737.8 (SGMA), pursuant to Senate Bill 1168, Senate Bill 1319, and Assembly Bill 1739, which was approved by the Governor on September 16, 2014, and went into effect on January 1, 2015; and
- C. **WHEREAS**, the Subbasin have been designated by the California Department of Water Resources (DWR) as a high-priority subbasin and is subject to the requirements of SGMA; and
- D. **WHEREAS**, SGMA requires that all medium and high priority groundwater basins in California be managed by a GSA and that such management be implemented pursuant to an approved Groundwater Sustainability Plan (GSP); and
- E. **WHEREAS**, in January of 2022, the Corning Sub-basin Groundwater Sustainability Agency (CSGSA) and Tehama County Flood Control and Water Conservation District (the District), collectively GSAs, submitted the Corning Subbasin GSP to DWR; and
- F. **WHEREAS**, in October of 2023, DWR determined the GSP was incomplete and would require revisions prior to being determined as adequate under SGMA; and
- G. **WHEREAS**, SGMA defines sustainability as the management of groundwater that can be maintained during the 20-year GSP Implementation Period without causing undesirable results; and
- H. **WHEREAS**, under SGMA the GSAs are responsible for managing groundwater under the GSP to achieve and maintain sustainability according to conditions after SGMA was effective that are caused by groundwater management in the Subbasin; and
- I. **WHEREAS**, it is acknowledged that sustainable management may result in some groundwater level decline during the GSP Implementation Period prior to achieving sustainable groundwater conditions by or before 2042 and this decline may give rise to adverse impacts to some wells; and
- J. **WHEREAS**, it is acknowledged that the number of wells that may be adversely impacted during the 20-year GSP Implementation Period (prior to 2042) is heavily dependent on hydrologic conditions, including precipitation and snowpack during that time period; and
- K. **WHEREAS**, the GSAs acknowledges that the number of wells that may be adversely impacted during the 20-year GSP Implementation Period (prior to 2042) may be affected by implementing projects and management actions in the Subbasins; and

***** DRAFT FOR DISCUSSION *****

- L. **WHEREAS**, the GSAs recognize that in order to obtain a determination that the GSPs are adequate, DWR is seeking a firm commitment from the GSAs to develop well mitigation and related actions to address impacts caused by their management of the Subbasins; and
- M. **WHEREAS**, it is acknowledged that SGMA does not require GSAs to develop well mitigation programs; and
- N. **WHEREAS**, the GSAs acknowledge that SGMA requires sustainable groundwater management; however, SGMA does not make GSAs responsible for injury from overdraft, nor does it require or assign any liability to GSAs to provide, ensure, or guarantee any level of water quality or access; and
- O. **WHEREAS**, the GSAs acknowledge that the consideration, adoption, or implementation of any mitigation program will be limited to impacts related to GSA management, will not extend to mitigation issues related to the effects of normal wear and tear on wells and appurtenances, and will include express disclaimer that the GSAs cannot be held liable for any impacts from overdraft; and
- P. **WHEREAS**, it is acknowledged that well mitigation and related actions will be implemented in coordination with other programs related to mitigating and resolving well issues and impacts, as applicable, including County-administered programs; and
- Q. **NOW, THEREFORE**, in consideration of the conditions contained herein and these Recitals, which are hereby incorporated herein by this reference, the District or CSGSA has committed to review, consider, and undertake mitigation actions for water well impacts resulting from declining groundwater levels that occur from GSA management activities during the GSP Implementation Period, through development and implementation of a Well Mitigation Program (Program) as follows:

Commented [LH1]: One Resolution for each; select appropriate agency

1. PROGRAM ELIGIBILITY AND APPLICATION

Program eligibility criteria will be finalized, potentially including:

- Property eligibility
- Eligible mitigation versus non-eligible mitigation (what will and will not be covered) based on evaluation of whether issues are related to groundwater management, which may include evaluation of:
 - a. Groundwater levels
 - b. Timing of groundwater decline
 - c. Groundwater quality
 - d. Well casing
 - e. Well depth
 - f. Minimum threshold exceedances
 - g. Historical overdraft
 - h. Recent hydrology
 - i. Recharge programs
 - j. Age and condition of well

***** DRAFT FOR DISCUSSION *****

- Acute, short-term mitigation
- Chronic, long-term mitigation
- Identified areas of concern where minimum threshold exceedances and/or undesirable results have been documented.

Program application process (how property owners will apply to and be approved to participate in the Program):

- The District and/or CSGSA will draft an application, the purpose of which is to support determining eligibility, prioritization, well owner agreement, award, and implementation.

Prioritization (order in which applications are processed and funding is allocated)

- Initial applications will be prioritized based on the date of submittal.

The District and/or CSGSA will consider whether there are other reasons to consider prioritization of well-mitigation, including, but not limited to, groundwater quality, number of people served, availability of interim supplies, and office of emergency services service.

The District and/or CSGSA will also specify non-eligible services, potentially including, but not limited to:

- Ongoing maintenance
- Non-essential uses of water
- Repair or replacement of piping/infrastructure associated with moving water from the well itself to any other location.

2. PROGRAM MITIGATION MEASURES

Program mitigation measures may include, but are not limited to:

- Short-term solutions in emergencies, such as delivery of bottled water and/or water tanks. (Considered only for temporary mitigation while other actions are in progress.)
- Deepening existing water wells, or otherwise rehabilitating or replacing such wells (including abandonment of existing wells).
- Drinking water well consolidation (many-to-one).
- Connection to or development of public water systems to serve impacted communities.
- Connection to municipal water systems.

The appropriate Program mitigation measures for each mitigated well will be informed by and determined following a structured, programmatic initial well evaluation process involving (but not limited to):

***** DRAFT FOR DISCUSSION *****

- Inspection of the conditions of the well, including assessment of the current or anticipated operational issue(s) associated with the well and underlying causes of those impacts.
- Determination that the well impacts are related to groundwater management during the GSP Implementation Period (e.g., not related to effects of normal wear and tear on drinking water wells)
- Determination and recommendation of an appropriate mitigation strategy (i.e., one of the potential Program mitigation measures above).

The Program is considered a temporary solution to mitigating well impacts before achieving and maintaining sustainable groundwater conditions (by 2042).

The Program and implementation of program mitigation measures will be coordinated with other applicable programs in the Subbasin, including County-administered programs.

The parties anticipate that mitigation will occur only once for each well, and will be appropriate to and commensurate with the actual or anticipated well impacts resulting from groundwater management during the GSP Implementation Period. By way of example only, if a well is dry due to groundwater level decline, and deepening that well is the appropriate Program mitigation measure, the well will be deepened below the minimum threshold of the associated representative monitoring site well to reduce the likelihood that the same well impacts will not occur again during GSP implementation.

It is also anticipated that potential Program measures may include, but will not be limited to, well permitting or ordinances to spatially and vertically isolate new wells to minimize adverse impacts on existing water wells. The design and implementation of such measures would be coordinated with existing and/or new County well permitting processes and ordinances.

3. FUNDING AND FINANCING

The District and CSGSA will fund the Program through long term GSA funding mechanisms as determined by the District Board and CSGSA respectively.

Estimated expenses for the Program are anticipated to range between:

- \$300,000 for Program startup (years 1-2), and \$75,000 for Program administration thereafter (years 3+)
- \$3,000,000 for Program mitigation measures, assuming (for planning purposes), that approximately 150 wells may require mitigation and that the cost of mitigation per well is approximately \$20,000, on average, although the precise number and costs of mitigation are subject to refinement during Program development.

However, these numbers are only estimated for planning purposes and are subject to revision during Program development.

***** DRAFT FOR DISCUSSION *****

It is anticipated that the Program funding will come from one, or a combination, of the following sources established by the Parties:

- GSA fees and assessment
- Funds generated through implementation of other projects and management actions (e.g., fines and/or penalties)
- County/state/federal funding, as available
- Other sources, as identified

4. TERM

The Program shall be developed, and implementation shall begin no later than January 1, 2026 (the Program start date). The Program shall cover eligible mitigation as of the Program start date and shall continue thereafter until groundwater sustainability is achieved during the GSP Implementation Period, or as otherwise directed by the GSAs.

5. PROGRAM IMPLEMENTATION AND MANAGEMENT

It is anticipated that a committee will be formed to create and set the final terms of the Program. A draft implementation flow chart is attached, as **Exhibit A** for reference however the final implementation and management of the Program will be approved by the GSAs prior to the program start date.

6. WELL OWNER AGREEMENTS

After application, eligibility, and mitigation development, mitigation will need to be accompanied by a well owner agreement that includes several components, including but not limited to the following:

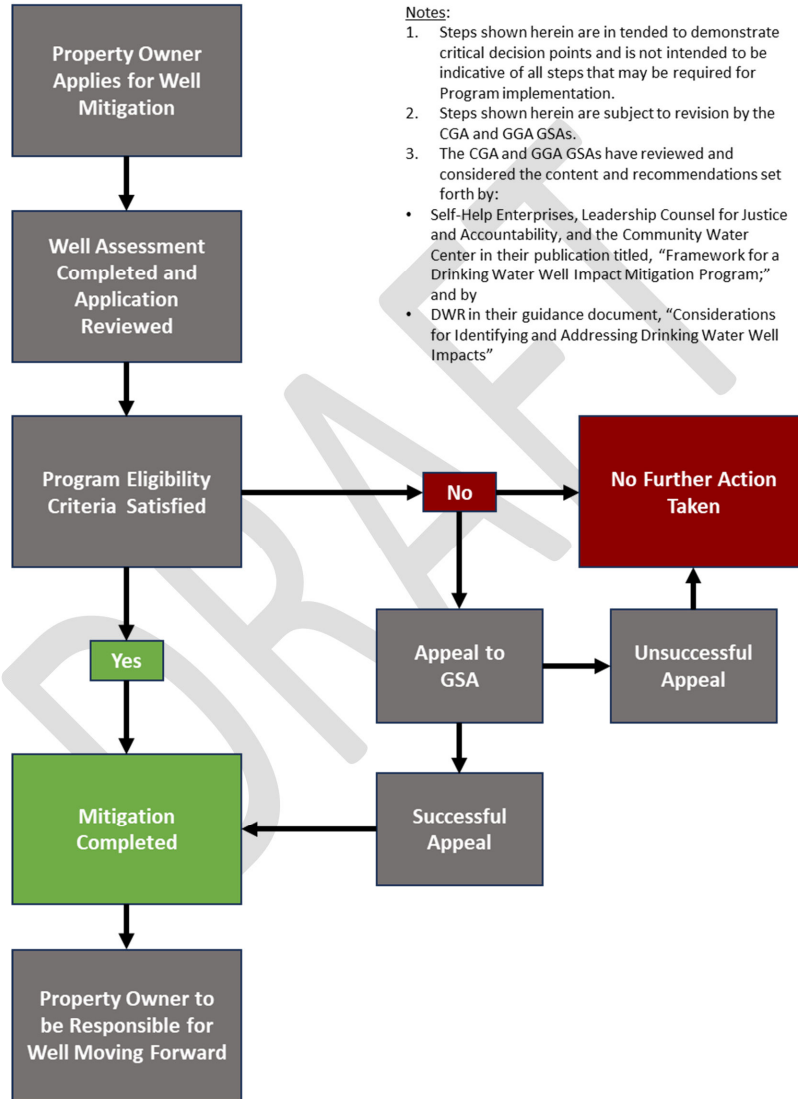
- Mitigation award (how will the costs of mitigation be reviewed and approved);
- Recordation of mitigation award;
- Post-mitigation responsibility (property owner to be responsible for operations, maintenance and repair of water well);
- Indemnification of the GSA;
- Easement or land use permissions

7. ENVIRONMENTAL REVIEW

The GSAs will complete any environmental review as may be determined necessary for Program implementation.

*** DRAFT FOR DISCUSSION ***

Exhibit A.
Well Mitigation Program
DRAFT Implementation Flowchart.



5. Groundwater Sustainability Agency Updates

Groundwater Sustainability Agency staff and members may provide activity updates to the CSAB.

6. Corning Subbasin Advisory Board Member Reports and Comments

Members of the CSAB are encouraged to share information, reports, comments, and suggest future agenda items. Action cannot be taken on matters brought up under this item.

7. Next Meeting

The next regular meeting is scheduled for April 3, 2024 at 1:30 p.m.

8. Adjourn

The meeting will be adjourned.
