

# GSP Revision and Implementation Status

Corning Subbasin Advisory Board Meeting



**TEHAMA COUNTY**  
FLOOD CONTROL AND WATER CONSERVATION DISTRICT

March 27, 2024



**Luhdorff &  
Scalmanini**  
Consulting Engineers

# CSAB Special Meeting Agenda

- Revised GSP Update
- Review and Recommend Setting Revised Minimum Thresholds and Sustainable Management Criteria
- Review and Recommend Adoption of Demand Management Resolution
- Review and Recommend Adoption of Well Mitigation Resolution
- Review and Recommend Adoption of Draft Revised Portions of the Corning Subbasin GSP
- Overview of Next Steps (no action)

# Draft GSPs

**Goal for this meeting:** Review and Recommend Adoption of Draft Revised Portions of Corning Subbasin GSPs.

**Materials included in Meeting Packet:** Draft Revised Portions of the GSP

**Next steps for the GSP:**

- 3/28 (Tomorrow) Corning Sub-basin GSA to receive presentation on updated portions of the Corning GSP
- 4/4 Joint GSA Meeting to review, and provide comments on the Corning GSP, inclusive of the revised MTs, SMCs
- 4/11 Corning Sub-basin GSA meeting, public hearing to adopt the Revised Corning GSP
- 4/15 Tehama FCWCD Board of Directors meeting, public hearing to adopt the Revised Red Bluff, Los Molinos, Antelope, and Corning GSPs

# MTs and SMCs

**Goal for this meeting:** Review and Recommend Setting Revised Minimum Thresholds and Sustainable Management Criteria for the Corning Subbasin GSP.

**Materials included in Meeting Packet:** Draft Revised Portions of the Corning GSP

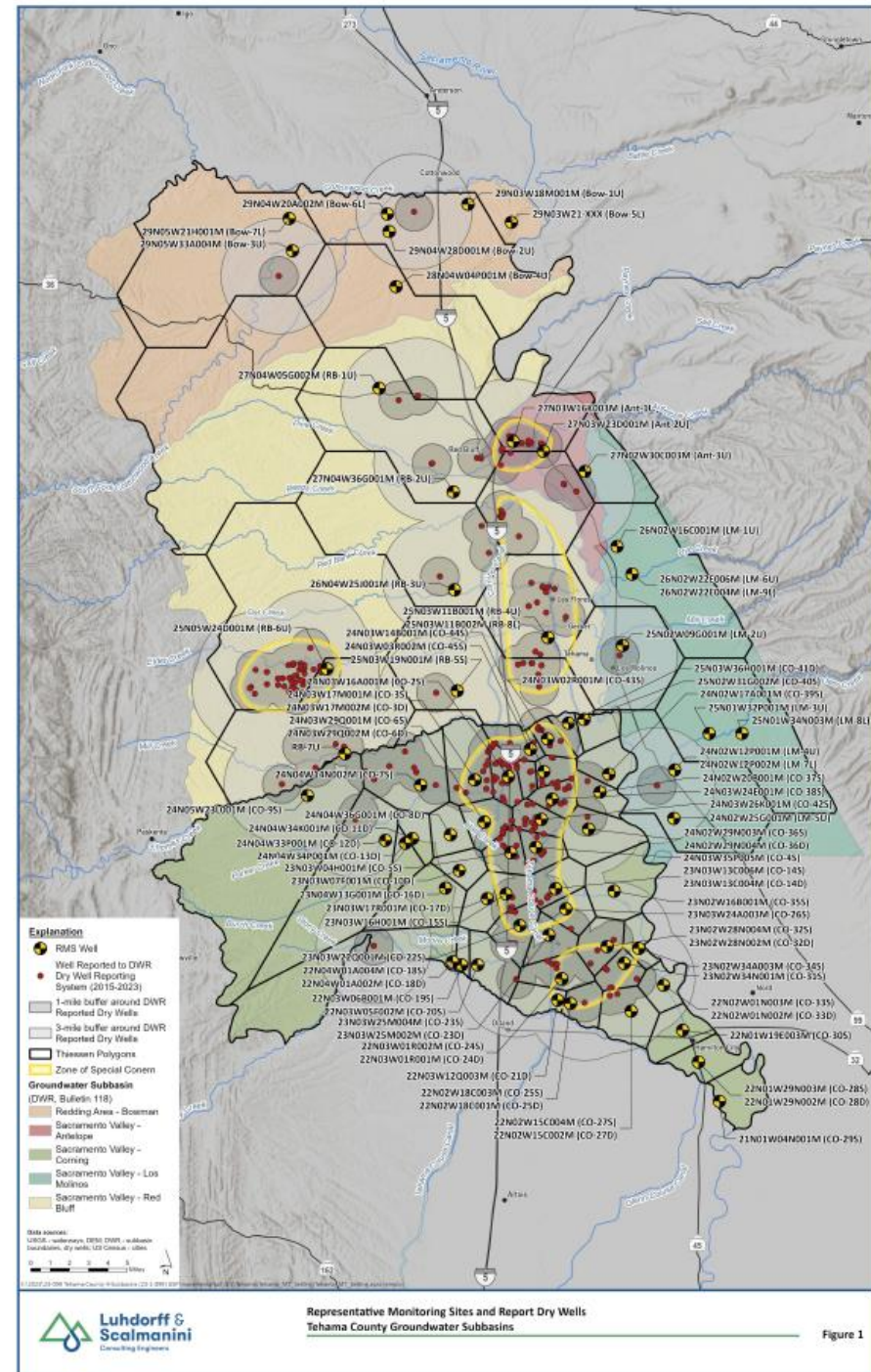
**Next steps for the MTs and SMCs:**

- 3/27 (Earlier Today) Tehama County Groundwater Commission reviewed and considered setting revised MTs and SMCs for the Corning GSP
- 3/28 (Tomorrow) Corning Sub-basin GSA Meeting to receive presentation on revised MTs, SMCs for the Corning GSP
- 4/4 Joint GSA Meeting to review and to provide comments on the Corning GSP, inclusive of the revised MTs, SMCs
- 4/11 Corning Sub-basin GSA Meeting, public hearing to adopt the Revised Corning GSP
- 4/15 Tehama FCWCD Board of Directors Meeting, public hearing to adopt the Revised Red Bluff, Los Molinos, Antelope, and Corning GSPs

# Corning GSP – Revised Groundwater Level Minimum Threshold, Sustainable Management Criteria

- Overview
- Special Zones (Based on Dry Wells Reporting)
- Minimum Thresholds (MT)
  - Within Specialized Zones, 2015-2022 Groundwater Low
  - Outside of Specialized Zones, 2015-2022 Groundwater Low plus a 20' Buffer

<https://infolsce.maps.arcgis.com/apps/webappviewer/index.html?id=f72886c3ddf440648d30caf73013d1ac>



# MTs and SMCs



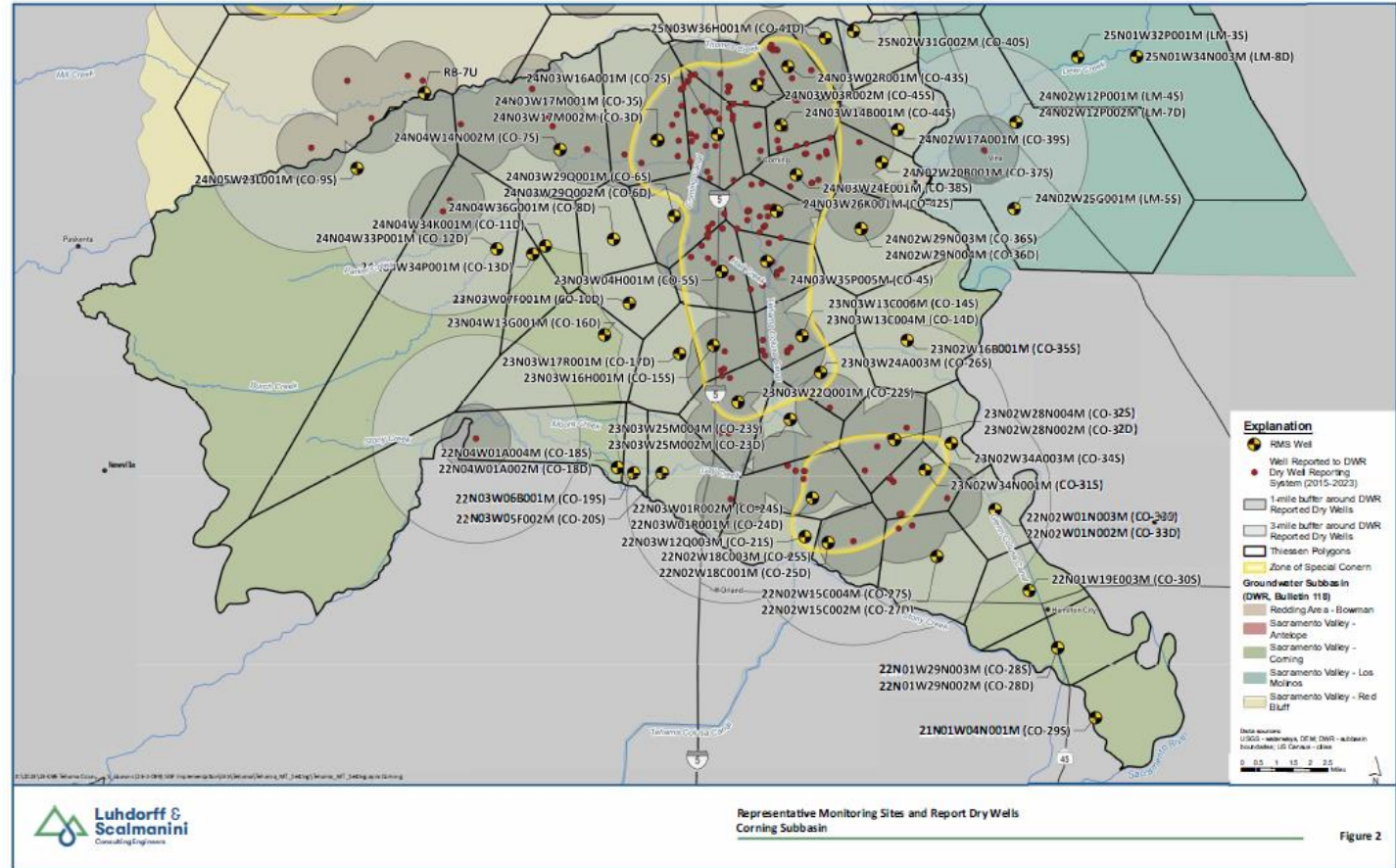
## SMC Data Package

Corning Subbasin

March 27-28, 2024



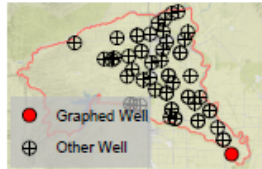
PREPARED BY



<https://infolsce.maps.arcgis.com/apps/webappviewer/index.html?id=f72886c3ddf440648d30caf73013d1ac>



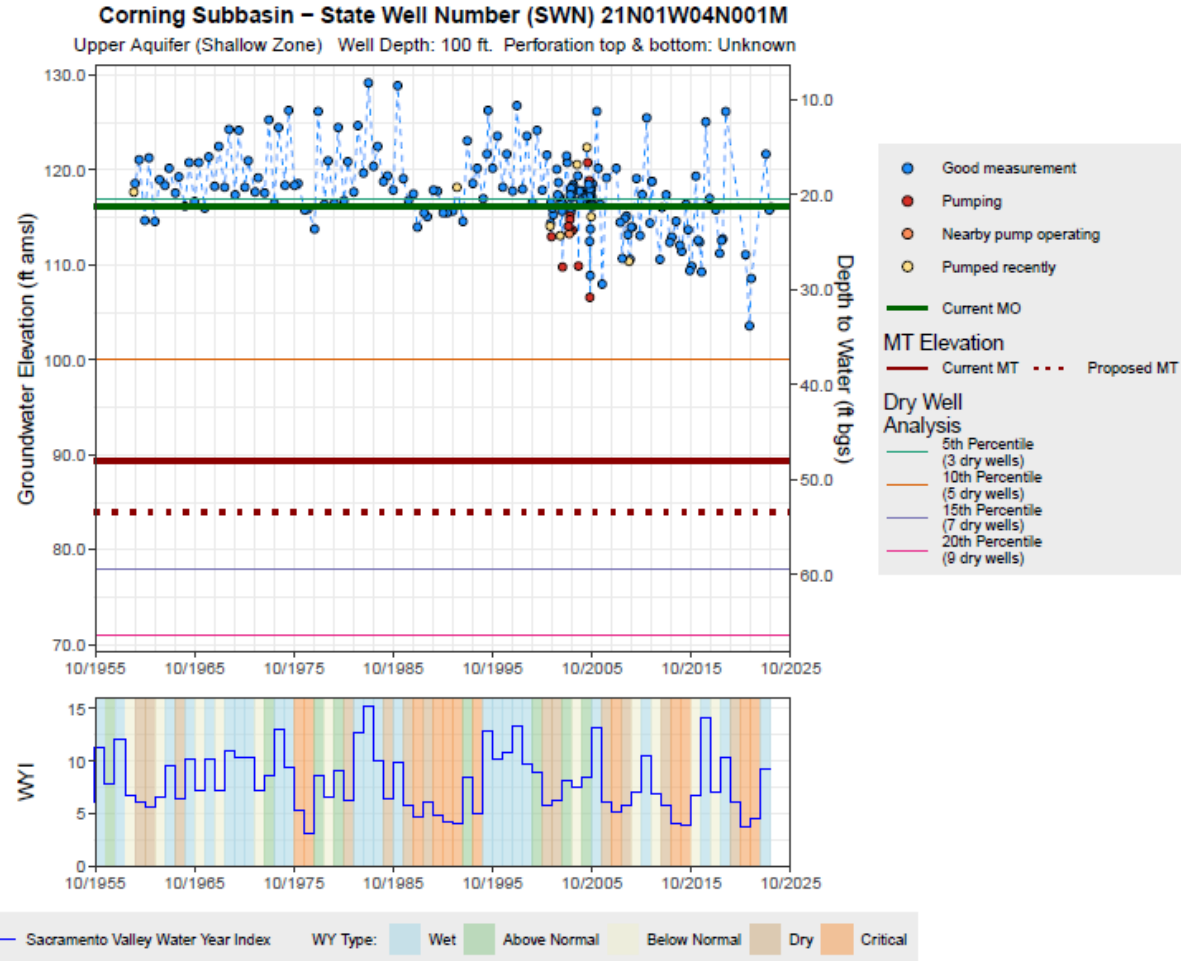
# MTs and SMCs



Area: Outside of Special Zone  
Basis: 2020–2022 low -20 ft  
GWE: 84 ft amsl  
DTW: 54 ft bgs

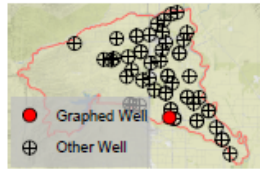
SMC  
IM (2027) = 113.5 ft amsl  
MO = 116.1 ft amsl  
Old MT = 89.3 ft amsl

Statistics of Spring WL  
Past 20 years (2003 to 2023):  
Change = 0.2 ft  
Ave. change = 0.01 ft/yr  
Ave. WL = 121.12 ft amsl



	All wells	Domestic	Agriculture	Industrial	Public	Unknown
Total Well Count	43	6	30	0	0	7
Number and Percent Impacted	5 (12%)	2 (5%)	0 (0%)	0 (0%)	0 (0%)	3 (7%)

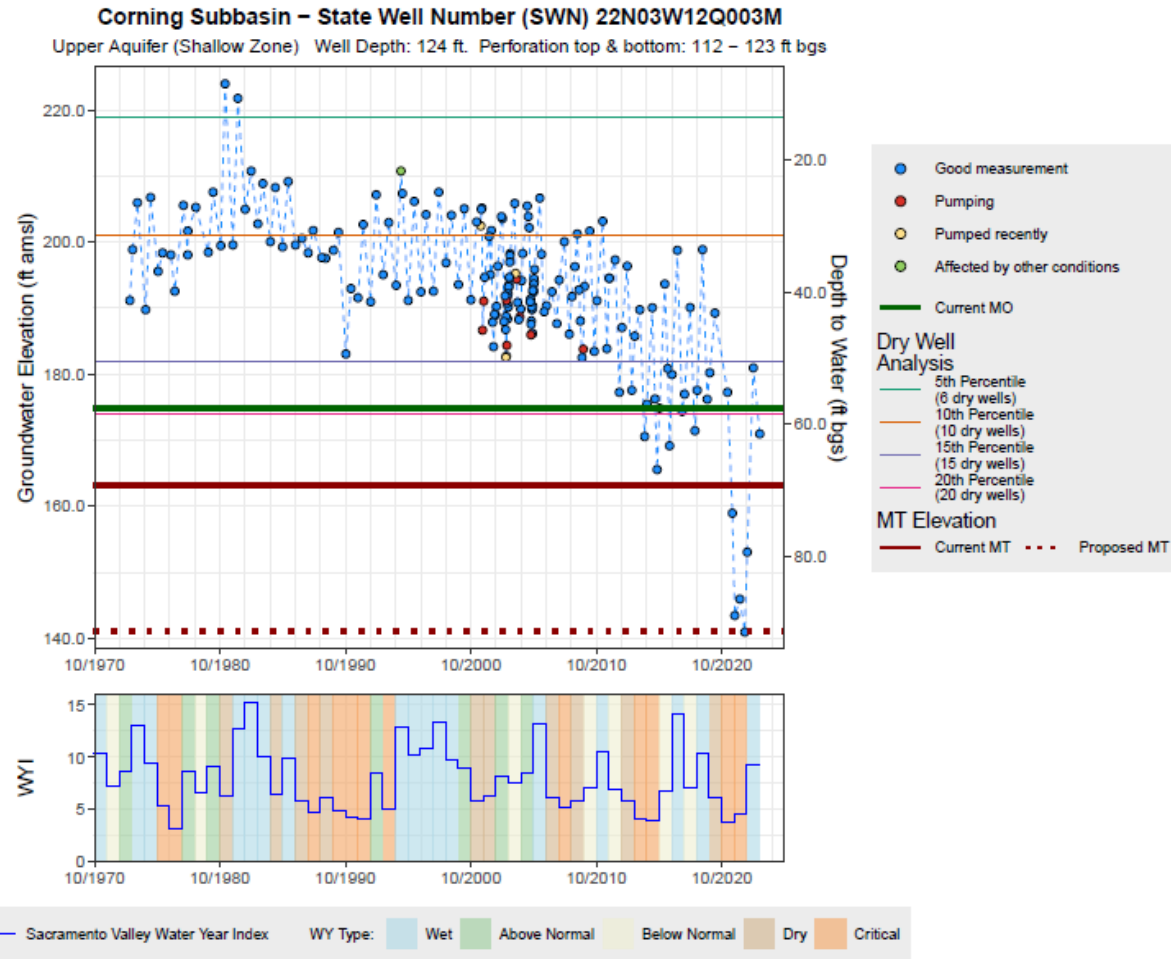
# MTs and SMCs



Area: Within Special Zone  
 Basis: 2020–2022 low  
 GWE: 141 ft amsl  
 DTW: 92 ft bgs

SMC  
 IM (2027) = 174.8 ft amsl  
 MO = 174.8 ft amsl  
 Old MT = 163.2 ft amsl

Statistics of Spring WL  
 Past 20 years (2003 to 2023):  
 Change = -22.9 ft  
 Ave. change = -1.15 ft/yr  
 Ave. WL = 200.25 ft amsl



	All wells	Domestic	Agriculture	Industrial	Public	Unknown
Total Well Count	98	67	21	0	0	10
Number and Percent Impacted	35 (36%)	24 (24%)	2 (2%)	0 (0%)	0 (0%)	9 (9%)



# Recommend Adoption of Revised Portions of GSP

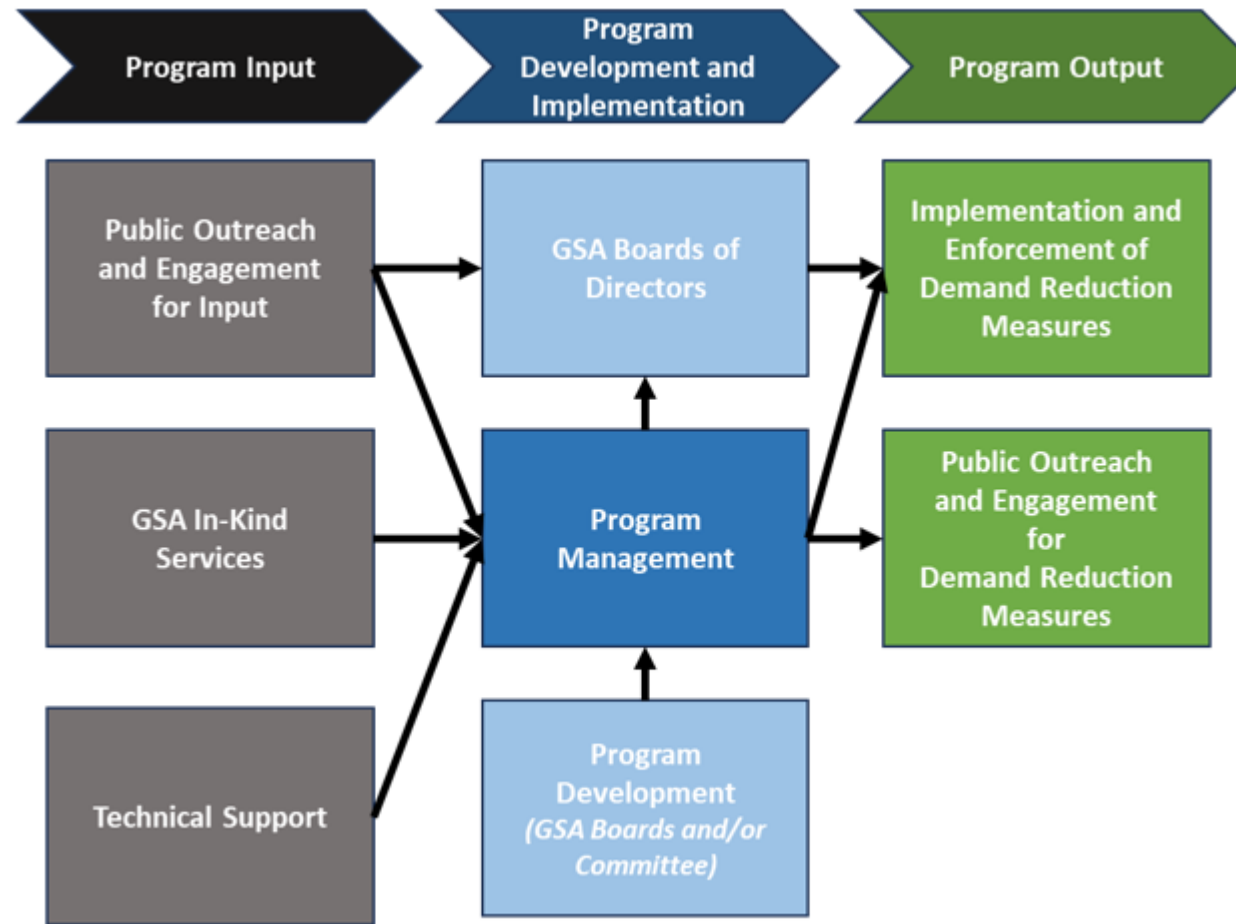
## Actions:

- Corning-Subbasin GSA and Tehama County FCWCD Board of Directors provide comments at their 4/4 Joint GSA Board meeting.
- Comments will be incorporated, and adoption of the Revised Corning GSP will occur at the 4/11 Corning Sub-basin GSA meeting
- Comments will be incorporated, and adoption of the Revised Red Bluff, Los Molinos, Antelope, and Corning GSPs will occur at the 4/15 Tehama FCWCD Board of Directors meeting.

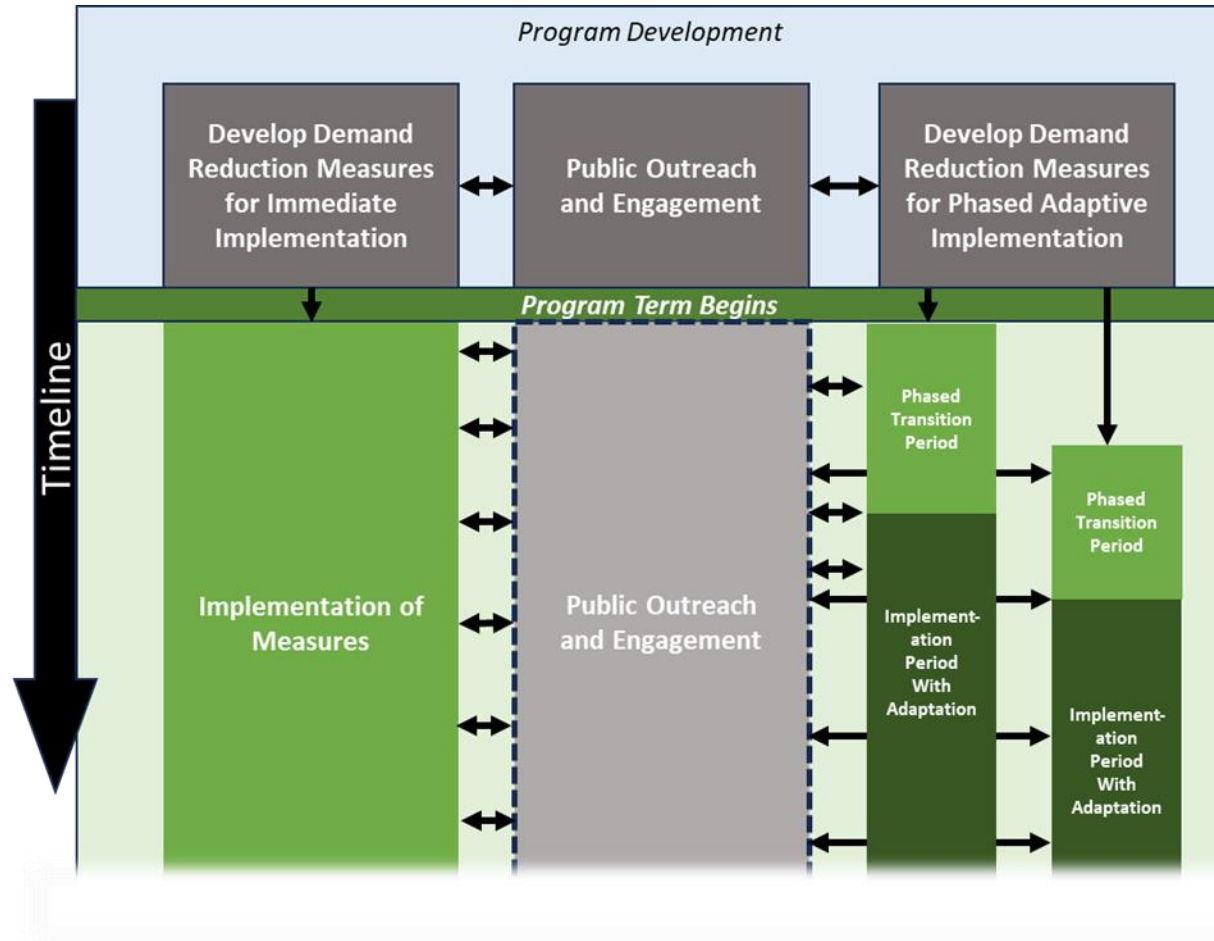
# Draft Resolutions

- **Goal for this meeting:** Review and Recommend Adoption of the Demand Management and Well Mitigation Resolutions for the Corning Subbasin at the upcoming Joint GSA Board Meeting scheduled for April 4.
- Materials included in Meeting Packet: Draft Demand Management and Well Mitigation Resolutions for Corning (methodology was previously approved in concept at 3/6 CSAB Meeting)
- Next steps for the Resolutions:
  - Legal Review
  - 3/25 (Earlier Today) Tehama Groundwater Commission received an update on their Board's review and adoption of the resolutions in the Corning Subbasin
  - 3/28 (Tomorrow) CSGSA Meeting to review draft resolutions for the Corning Subbasin
  - 4/4 Joint GSA Meeting to adopt the resolutions for the Corning Subbasin
  - Resolutions included in Revised GSPs, submitted to DWR

# Demand Management Resolution – Highlights



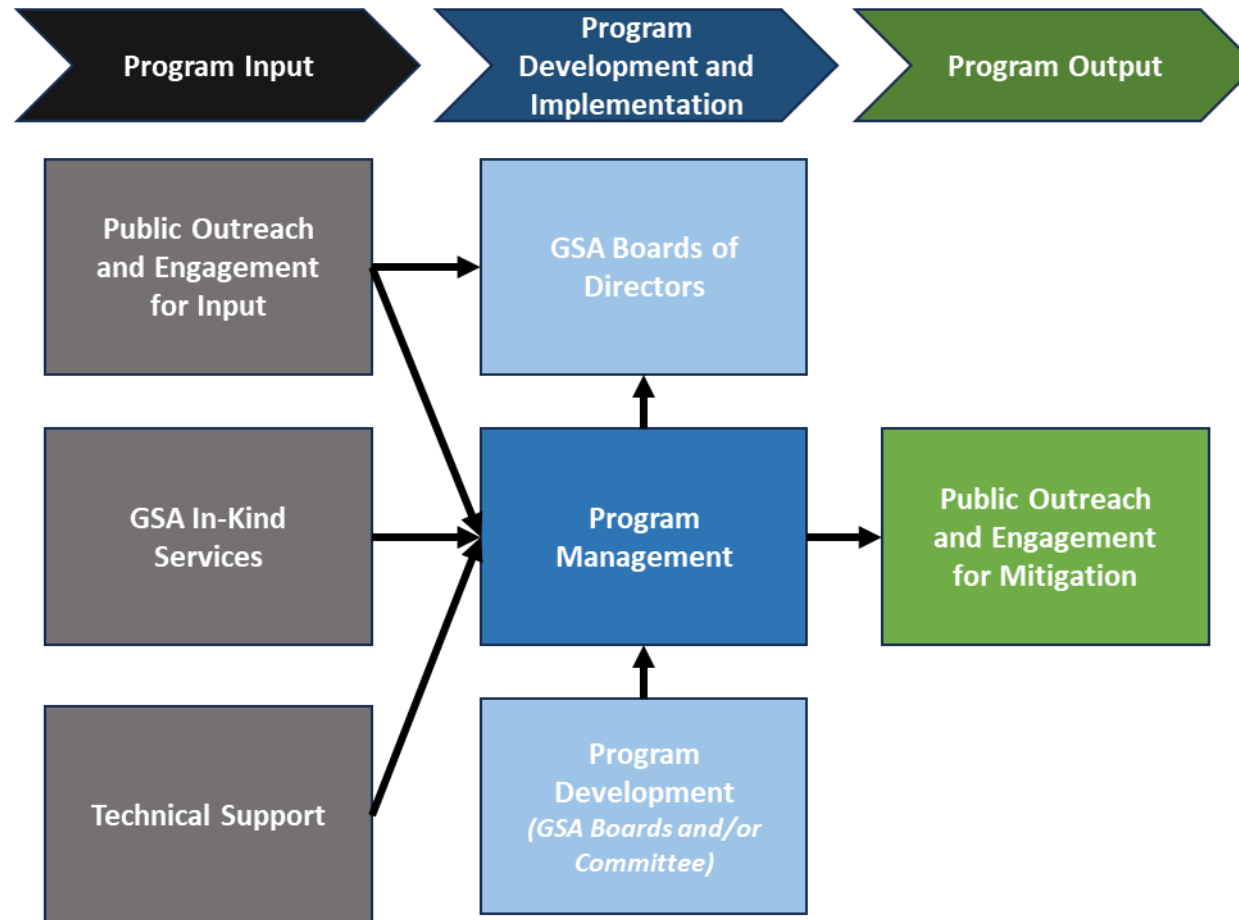
# Demand Management Resolution – Highlights



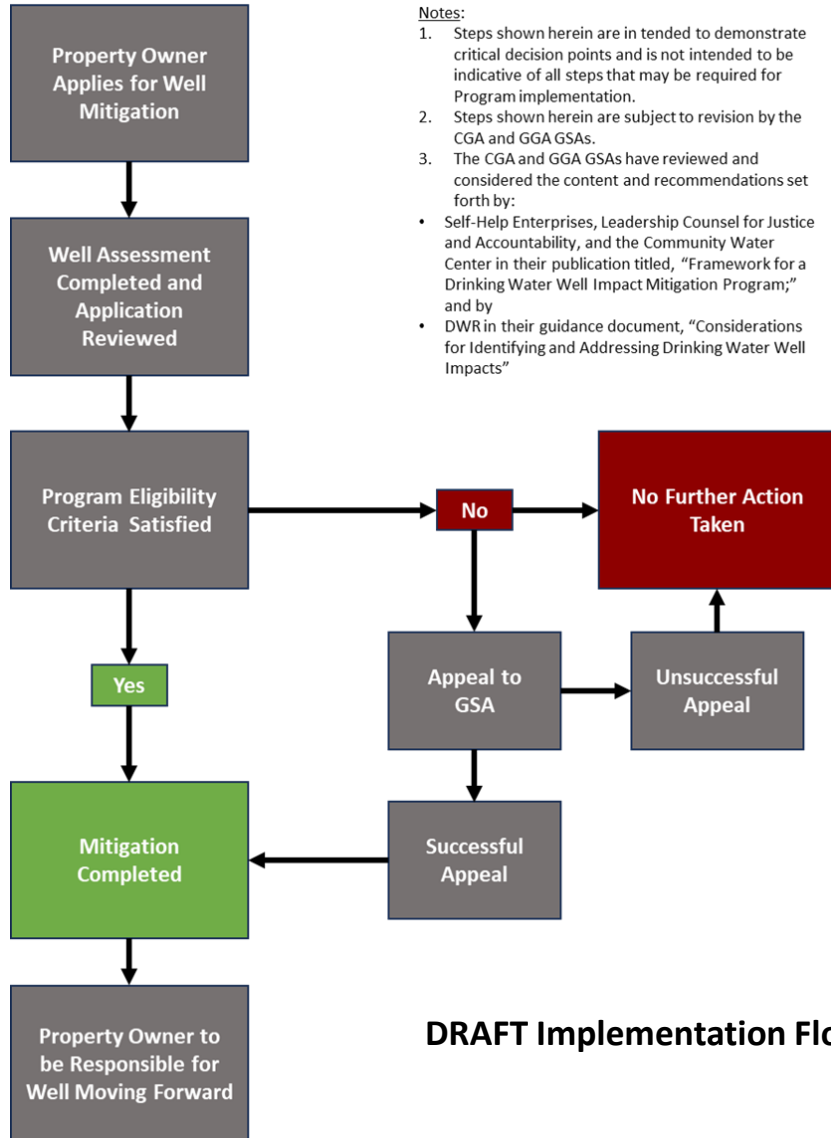
**Notes:**

1. Steps shown herein are intended to demonstrate critical components and is not intended to be indicative of all steps that may be required for Program implementation.
2. Steps shown herein are subject to revision by the CGA and GGA GSAs.

# Well Mitigation Resolution – Highlights



# Well Mitigation Resolution – Highlights



**DRAFT Implementation Flowchart**

## Colusa Subbasin Domestic Well Mitigation Program

### *DRAFT Initial Well Evaluation Outline To Be Completed by Licensed Preferred Contractor*

The Initial Well Evaluation (Evaluation) is a formal, structured assessment of each drinking water well for which enrollment in the Domestic Well Mitigation Program is sought. The objectives of the Evaluation are to:

- Inspect the conditions of the well, including an assessment of the current or anticipated operational issue(s) associated with the well and underlying causes of those impacts.
- Determine that the well impacts are related to groundwater management during the GSP Implementation Period (e.g., not related to normal wear and tear)
- Determine and recommend an appropriate mitigation strategy (i.e., one of the potential Program mitigation measures identified in the MOU).

It is anticipated that the Evaluation will assess and address the following topics, although this list is subject to revision during Program development:

- Property Owner and Location Information
  - Name and contact information of property owner
  - Name and contact information of contact at well location (if different)
  - Well location (address, assessor's parcel number of parcel where well is located, coordinates identifying where well is located)
  - Nearest municipal or public water system (name, distance; mapping tool may be useful)
  - Nearest groundwater level RMS well (SWN, distance; mapping tool may be useful)
- Well Information
  - Well completion report number of well
  - State well number of well
  - Date drilled
  - Well construction details
    - Borehole information (depth, diameter)
    - Casing information (depth, diameter, material, wall thickness)
    - Gravel pack information (if it is gravel packed, depth interval of gravel pack)
    - Sanitary seal information (depth)
    - Perforation details (number, intervals, type, where pump is currently installed)
  - Remaining operational life expectancy of well, given well construction conditions and date drilled
- Pump Information
  - Date installed

**DRAFT Initial Well Evaluation**

# Recommend Adoption of Resolutions

## Actions:

- Recommend Tehama County FCWCD Board of Directors and Corning Sub-Basin GSA Committee adopt the Demand Management Resolution for the Corning Subbasin during their Joint Meeting on April 4.
- Recommend Tehama County FCWCD Board of Directors and Corning Sub-Basin GSA Committee adopt the Well Mitigation Resolution for the Corning Subbasin during their Joint Meeting on April 4.

# Meetings

## Tehama County Regular Meetings

- Groundwater Commission at 8:30a in Board Chambers Room, 727 Oak St., Red Bluff:  
Apr 24 | May 22
- Flood Control Board of Directors at 10a in Board Chambers Room, 727 Oak St., Red Bluff:  
Apr 4 (Tentative)\* | Apr 15 | May 20

***\*Flood Control Board of Directors Apr 4 meeting will be at 6:00p in City of Corning Council Chambers, 794 Third Street, Corning***

## Corning Subbasin Regular Meetings

- Corning Subbasin Advisory Board (CSAB) at 1:30p in City of Corning Council Chambers, 794 Third Street, Corning

Apr 3 | Jun 5 | Aug 7

- Corning Sub-basin GSA Committee (Glenn County) at 2p in Glenn-Colusa Irrigation Pump Station , 7854 County Rd 203, Orland

Mar 28 | Apr 4 (Tentative) \* | Apr 11 | Apr 25 | May 23

***\*Corning Sub-basin GSA Committee Apr 4 meeting will be at 6:00p in City of Corning Council Chambers, 794 Third Street, Corning***



TehamaCountyWater.org

CorningSubbasinGSP.org | [bit.ly/Shortlinkto-CSGSA](https://bit.ly/Shortlinkto-CSGSA)



# Stay Involved and Connect with Us

## Updates

- Join the Interested Parties email list (Tehama) at [TehamaCountyWater.org/GSA/](http://TehamaCountyWater.org/GSA/) or by emailing [TehamaGSA@tcpw.ca.gov](mailto:TehamaGSA@tcpw.ca.gov)
- Facebook: Tehama County Flood Control & Water Conservation District
- Join the Interested Parties email list (Corning Sub-basin GSA) at [glennsgma@countyofglenn.net](mailto:glennsgma@countyofglenn.net) or by emailing Lisa Hunter at [Lhunter@countyofglenn.net](mailto:Lhunter@countyofglenn.net)
- [Corning Sub-basin Groundwater Sustainability Agency | County of Glenn](#)

## Monitoring & Projects

- Data Viewer Map: [bit.ly/TehamaGlennSGMADataMapViewer](http://bit.ly/TehamaGlennSGMADataMapViewer)



Domestic Well Monitoring



Recharge Opportunities

# Questions?

